

Radio remote control for light mast, turret and portable pump



Description

All via CAN-bus controlled components at the vehicle can be controlled with the Rosenbauer radio remote control simply and surely. Not only the light masts FLEXILIGHT and FLEXILIGHT LED, also up to 4 turrets can be controlled.

Benefits

Universal control

- light mast FLEXILIGHT
- light mast FLEXILIGHT LED
- turret RM15
- turret RM25
- turret RM60
- turret RM130
- portable pump FOX

Multifunctional

- double-allocation of the buttons - 16 different functions selectable
- for each apparatus a different button layout

Simple operation

- handy form
- carrying strap
- backlit display and buttons
- ergonomic order of buttons
- range at least 100 m

Future-proof

- extendable at any time - that means that further CAN-apparatus can be complemented anytime

Radio remote control for light mast, turret and portable pump



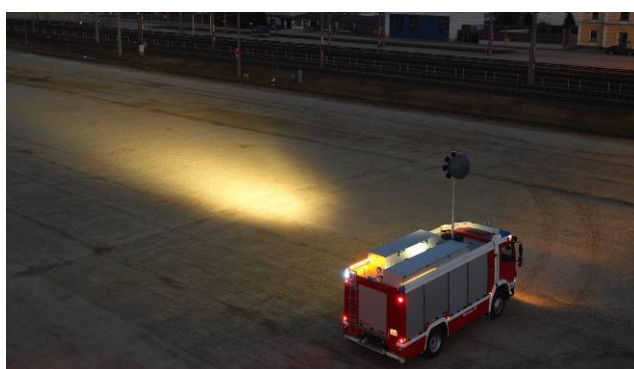
Turret RM15



Turret RM25



Turret RM60



Light mast FLEXILIGHT

Technical data

Type of protection	IP 65
Range	approx. 100 m (330 ft)
Weight	210 g (0,5 lbs)
Dimensions	(LxWxH) 215 mm x 56 mm x 37 mm (LxWxH) 8,5 in x 2,2 in x 1,5 in
Power supply	2x 1,2 V AA NiMH accumulators
Operation time	> 30 h with 2000 mAh NiMh accumulators
Buttons	<ul style="list-style-type: none">6 large round buttons, 2-stage for positioning5 small round buttons for multiple functions1 small angular button
Illumination	<ul style="list-style-type: none">discovering-light for the buttonsdisplay-illumination, when remote control is active
Display	LC- display, non-glare
Charging station	included, with wire leads and attached connector-plug for cigarette lighter

Contact

Rosenbauer International AG
Paschinger Straße 90
4060 Leonding, Austria
Tel.: +43 732 6794-0
Fax: +43 732 6794-91

www.rosenbauer.com

Text and illustrations are not binding. The illustrations may show optional extras only available at extra charge.
Rosenbauer retains the right to alter specifications and dimensions given herein without prior notice.

KR599
2010-05_RWe